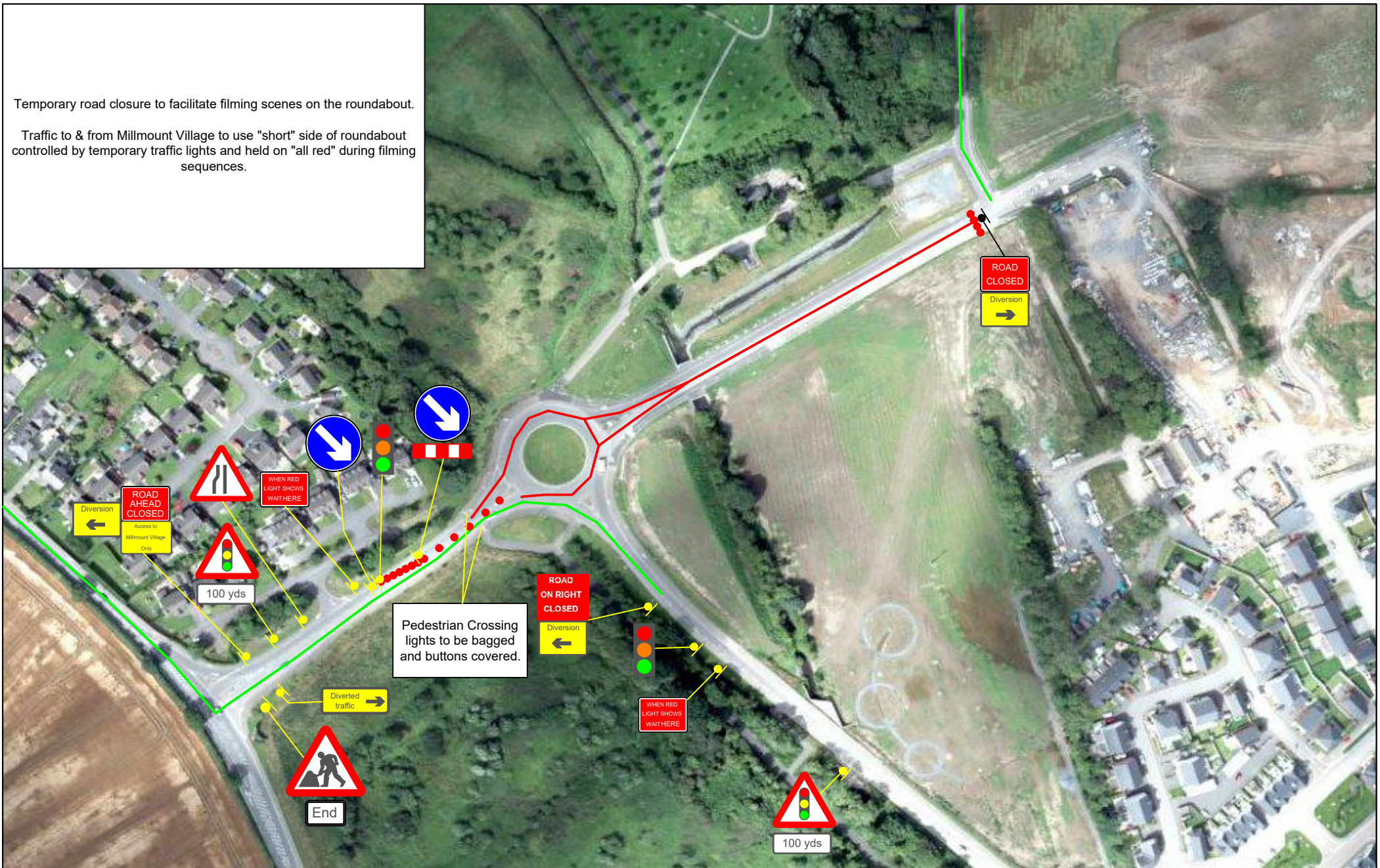


Temporary road closure to facilitate filming scenes on the roundabout.

Traffic to & from Millmount Village to use "short" side of roundabout controlled by temporary traffic lights and held on "all red" during filming sequences.



**NOTES:**  
 1. All traffic management to be in accordance with Chapter 8 of the Traffic Signs Manual.  
 2. All signs will comply with Traffic Sign Regulations in General Directions (TSRGD) 2002  
 3. Installation, maintenance and removal of traffic management will be carried out by Lantra approved operatives who have achieved Sector Scheme 12D training.

Closures

PROJECT  
 Frank of Ireland

DRAWN

SCALE Not to scale DIMENSIONS Metres

Drg No.  
 003

Original Drawing Size  
 A3

**GREEN TOWN TRAFFIC MANAGEMENT LTD.**

221a Hillhall Rd  
 Lisburn  
 Co. Antrim  
 BT27 5JA  
 Tel. 02892662077